

CSL-2000 Series

AIR & GAS

Duct Smoke Detector



Description

The CSL-2000 Series, 4-wire duct housing will accommodate either the ionization sensor or the photoelectric sensor. The interchangeable detector heads allow easy removal for quick cleaning and maintenance, or a change in application without removing the duct housing. The CSL-2000 samples air currents passing through a duct and gives dependable performance for management of fans, blowers, and air conditioning systems.

The CSL-2000 Series Smoke Detector is the latest innovation for early detection of smoke and products of combustion present in air moving through HVAC ducts in Commercial, Industrial and Residential application. The CSL-2000 is designed to prevent the re-circulation of smoke by the air handling systems, fans, and blowers. Complete systems may be shut down in the event of smoke detection. The CSL-2000 is designed and built to meet all local requirements, as well as the NFPA regulations regarding duct smoke detectors.

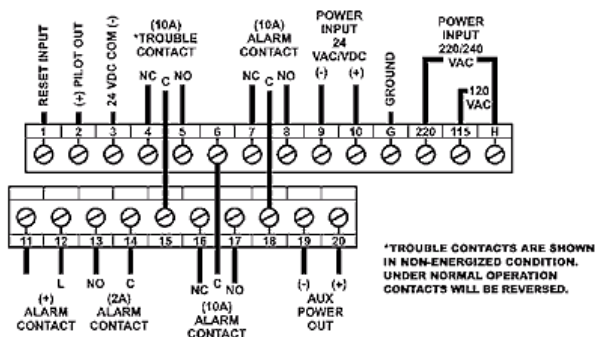
Output terminals are provided for remote accessories such as horns, strobes, remote status indicators and test/reset key switches or push buttons.

The CSL-2000 includes many features that represent true innovations from current generation duct smoke detectors. It is designed and built to meet all local requirements, as well as the NFPA regarding duct smoke detectors.

Features

- 24 VAC/DC or 120/240 VAC operation
- Simple change-out of photo or ion detector heads
- Low flow air velocity rating from 100 to 4000 FPM
- UL, CSFM and MEA Listed
- Two (2) sets of 10A form "C" alarm contacts
- One (1) set of 10A form "C" trouble contacts
- Easy and quick mounting to round or rectangular ducts from 1' - 12' wide
- Clear cover for convenient visual inspection
- Built-in reset switch that is also an alarm test switch

Wiring



Specifications

POWER REQUIREMENT	Stand By: 230 VAC-7.9 mA 115 VAC-13.8 mA 24 VAC-39.4 mA 24 VDC-13.5 mA	Alarm Current: 230 VAC-16.0 mA 115 VAC-27.0 mA 24 VAC-59.3 mA 24 VDC-128.7 mA
RELAY CONTACT RATING	Alarm Contacts: 2 sets form "C" rated at 10 amps @115 VAC resistive 1 set form "A" rated at 2 amps - Trouble Contacts: 1 set form "C" rated at 10 amps @ 115 VAC resistive	
AIR VELOCITY	.50 to 20 M/S (100 to 4000 FPM)	
AMBIENT TEMPERATURE	CSL-2000-N: 0-68°C (32 to 155°F) CSL-2000-P: 0-38°C (32-100°F)	
HUMIDITY	10% to 85% R.H. No Condensation	
WIRING	#14 to #22 AWG	
APPROVALS	Underwriters Laboratories Listed (UL268A;UROX.S2829) CSFM Listed (3240-1004:105) MEA Listed (73-92E;VOL.27)	
MATERIAL	Grey plastic backbox, clear plastic cover	
DIMENSIONS	343 mm L x 115 mm H x 58 mm D (13.5" x 4.5" x 2.25")	
MAX. NET WT.	1.14 KG (2.5 lbs.)	

Ordering Info

Part No.	Description
CSL-2000-N	4-wire ionization duct detector, high temperature applications
CSL-2000-P	4-wire photoelectric duct detector

Accessories

Part No.	Description
STN-1.0	Metal sampling tube duct widths 1' - 2'
STN-2.5	Metal sampling tube duct widths 2' - 4'
STN-5.0	Metal sampling tube duct widths 4' - 8'
STN-10.0	Metal sampling tube duct widths 8' - 12'
MS-RA/R	Remote Alarm LED (Red) and Push-Button Test/Reset Switch
MS-KA/R	Remote Alarm LED (Red) and Key-Operated Test/Reset Switch
MS-RH/KA/P/R	Remote Alarm Horn, Alarm LED (Red), Pilot LED (Green) and Key-Operated Test/Reset Switch